

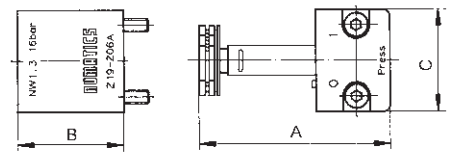
Accessories

Pilot Systems

Dimensions [mm]

| Type | A | B | C | Weight approx. [kg] | Order Code |
|---------------------------------------|------|------|------|---------------------|------------|
| 10 bar, without manual override | 59.0 | 32.0 | 30.0 | 0.063 | 219-216 |
| 10 bar, non-locking manual override | 59.0 | 32.0 | 30.0 | 0.063 | 219-217 |
| 10 bar, manual override push/locking | 59.0 | 32.0 | 30.0 | 0.063 | 219-218 |
| 16 bar*, without manual override | 59.0 | 32.0 | 30.0 | 0.063 | 219-219 |
| 16 bar*, non-locking manual override | 59.0 | 32.0 | 30.0 | 0.063 | 219-220 |
| 16 bar*, manual override push/locking | 59.0 | 32.0 | 30.0 | 0.063 | 219-221 |
| 16 bar*, non-locking manual override | 59.0 | 32.0 | 30.0 | 0.063 | 219-489 |

* only available with 16 bar solenoid



Exhaust Protection Screw

| Description | Weight approx. [gr] | Order Code |
|---|---------------------|------------|
| Exhaust protection screw for valve system | 1.850 | 125-1027 |

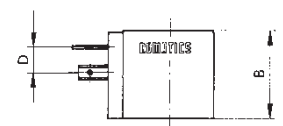
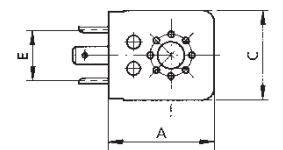
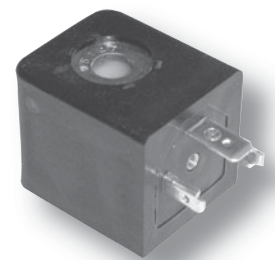


Plug-in Solenoids for Connector Sockets to DIN 43650, Form A, Type 30 mm

Dimensions [mm]

| Voltage | A | B | C | D | E | Weight approx. [kg] | Order Code |
|--|------|------|------|-----|------|---------------------|------------|
| 10 bar, 2.7 W 24 VDC | 35.5 | 30.0 | 30.0 | 9.0 | 18.8 | 0.10 | 225-354 |
| 10 bar, 5.2/3.9 VA 24 VAC, 50-60 Hz | 35.5 | 30.0 | 30.0 | 9.0 | 18.8 | 0.10 | 228-772 |
| 10 bar, 4.8/3.6 VA 110 VAC, 50-60 Hz and 42/48/60 VDC, 2.5/3.4/5.3 W | 35.5 | 30.0 | 30.0 | 9.0 | 18.8 | 0.10 | 228-773 |
| 10 bar, 4.9/3.7 VA 230 VAC, 50-60 Hz and 110 VDC, 3.9 W | 35.5 | 30.0 | 30.0 | 9.0 | 18.8 | 0.10 | 228-774 |
| 16 bar*, 6.8 W 24 VDC and 48/42-V, 50-60 Hz, 9.9/7.1 VA | 35.5 | 30.0 | 30.0 | 9.0 | 18.8 | 0.10 | 225-355 |
| 16 bar*, 10.8/7.6 VA 24 VAC, 50-60 Hz and 12 VDC, 7.8 W | 35.5 | 30.0 | 30.0 | 9.0 | 18.8 | 0.10 | 228-775 |
| 16 bar*, 10.5/7.6 VA 110 VAC, 50-60 Hz and 48/60 VDC, 5.3/8.3 W | 35.5 | 30.0 | 30.0 | 9.0 | 18.8 | 0.10 | 228-776 |
| 16 bar*, 10.5/7.6 VA 230 VAC, 50-60 Hz and 110 VDC, 6.3 W | 35.5 | 30.0 | 30.0 | 9.0 | 18.8 | 0.10 | 228-777 |

* only available with 16 bar pilot system



Subject to change without notice. Not liable for printing errors