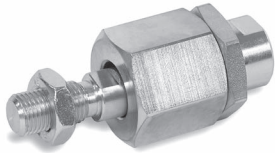


Flexo Coupling - PM5

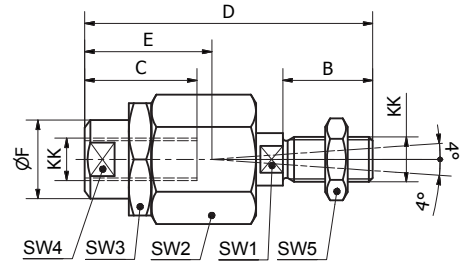


Flexo coupling for articulated mounting of piston rod. Flexo fitting is intended to take up axial angle errors within a range of $\pm 4^\circ$.

Materials:

- Flexo coupling, nut: Zinc-plated steel

Supplied complete with galvanized adjustment nut.



Bore Size mm	KK	B mm	C mm	D mm	E mm	ØF mm	SW1 mm	SW2 mm	SW3 mm	SW4 mm	SW5 mm	Weight kg	Part Number
32	M10x1.25	20	23	70	31	21	12	30	30	19	17	0.23	P1C-4KRF
40	M12x1.25	24	30	77	31	21	12	30	30	19	19	0.23	P1C-4LRF
50	M16x1.5	32	32	108	45	33.5	19	41	41	30	24	0.65	P1C-4MRF
63	M16x1.5	32	32	108	45	33.5	19	41	41	30	24	0.65	P1C-4MRF
80	M20x1.5	40	42	122	56	33.5	19	41	41	30	30	0.71	P1C-4PRF
100	M20x1.5	40	42	122	56	33.5	19	41	41	30	30	0.71	P1C-4PRF
125	M27x2	54	48	147	51	39	24	55	55	32	41	1.60	P1C-4RRF

Nuts



Intended for fixed mounting of accessories to the piston rod.

Material: Zinc-plated steel

All P1D cylinders are delivered with a zinc-plated steel piston rod nut.

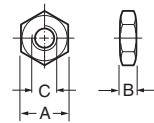
Stainless Steel Nut

Material: Stainless steel A2

Acid-proof nut

Material: Acid-proof steel A4

Cylinders with acid-proof piston rod are supplied with nut of acid-proof steel.



According to DIN 439 B

Bore Size mm	A mm	B mm	C	Weight kg	Part Numbers		
					Steel	Stainless Steel	Acid-proof
32	17	5.0	M10x1.25	0.007	0867340300	9126725404	0261109919
40	19	6.0	M12x1.25	0.010	0867340400	9126725405	0261109920
50	24	8.0	M16x1.5	0.021	0867340600	9126725406	0261109917
63	24	8.0	M16x1.5	0.021			
80	30	10.0	M20x1.5	0.040	0261109911	0261109921	0261109916
100	30	10.0	M20x1.5	0.040			
125	41	13.5	M27x2	0.100	0867340900	0261109922	0261109918
160/200	55	18.0	M36x2	C.F.	L075540036	Consult factory	Consult factory

C.F. = Consult Factory



For inventory, lead times, and kit lookup, visit www.pdnplu.com