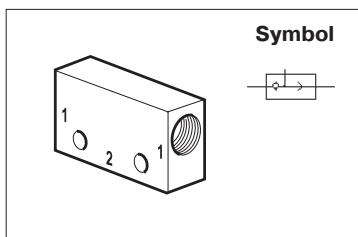


- Allows two separate signals to be applied to the air pilot
- 0,6 bar differential, Viton seals as standard



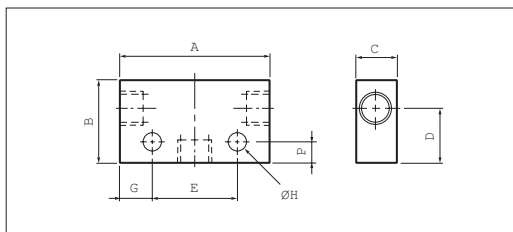
Operating information

Operating pressure:	1,3 to 17 bar
Flow:	See table below
Operating temperature:	-10°C to +60°C
Body material M5 and G1/8:	Aluminium
Body material G1/4:	Zinc
Shuttle ball material:	Plastic



Port Size	Qmax input at 6 bar, l/min	Weight kg	Order Code
G1/8	509	0,100	B43005B
G1/4	1076	0,172	B53005A

Dimensions (mm)



Port Size	A	B	C	D	E	F	G	H
G1/8	44,0	24	15	16,0	25	6	9,5	4,5
G1/4	52,0	30	22	20,5	35	10	8,5	5,5