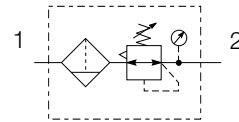


# P3L Lite Series Air Preparation System

## P3L Lite Filter / Regulator



### Symbols



- Integral 1/4 ports (BSPP & NPT)
- High efficiency 5 micron element as standard
- Excellent water removal efficiency
- Robust but lightweight construction
- Secondary pressure ranges 2, 4 & 8 bar
- Unbalanced poppet valve standard, with solid piston control

### Options:

<b>P 3 L</b>	<b>EA</b>	<b>2</b>	<b>P</b>		<b>N</b>	<b>P</b>	
<b>Thread type</b>		<b>Drain type</b>		<b>Mounting</b>			
BSPP	<b>1</b>	Manual push	<b>P</b>	Plastic panel mount nut *			
NPT	<b>9</b>	Semi-auto	<b>S</b>				
<b>Port size</b>		<b>Relief</b>		<b>Adjustment range</b>			
1/4	<b>2</b>	Relieving	<b>B</b>	<b>With round gauge</b>		<b>Without gauge</b>	
<b>Element</b>		Non relieving	<b>N</b>	2 bar	<b>Z</b>	2 bar	<b>Y</b>
5µ Element	<b>E</b>			4 bar	<b>M</b>	4 bar	<b>L</b>
40µ Element	<b>G</b>			8 bar	<b>G</b>	8 bar	<b>N</b>
<b>Bowl type</b>							
Poly bowl	<b>P</b>						

\* for individual mounting bracket see page:19

Port size	Description	Order Code	Flow dm <sup>3</sup> /s * (scfm) *	Max bar (psi)	Height mm (Inches)	Width mm (Inches)	Depth mm (Inches)
1/4"	8 bar Relieving - Poly bowl - Manual drain	<b>P3LEA12EPPBNNP</b>	12.9 (27.3)	10 (150)	175 (6.89)	40 (1.57)	40 (1.57)
1/4"	8 bar Relieving - Poly bowl - Semi-auto drain	<b>P3LEA12EPSBNNP</b>	12.9 (27.3)	10 (150)	175 (6.89)	40 (1.57)	40 (1.57)
1/4"	8 bar Relieving - Poly bowl - Manual drain + Gauge	<b>P3LEA12EPPBNGP</b>	12.9 (27.3)	10 (150)	175 (6.89)	40 (1.57)	72 (2.83)
1/4"	8 bar Relieving - Poly bowl - Semi-auto drain + Gauge	<b>P3LEA12EPSBNGP</b>	12.9 (27.3)	10 (150)	175 (6.89)	40 (1.57)	72 (2.83)

\* flow with 10 bar (145 psi) inlet pressure, 6.3 bar (91.3 psi) set pressure and 1 bar (14.5 psi) pressure drop.