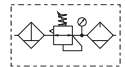


P32 Series, 60mm, air port G1/2

- Available in air ports G1/4 and G3/8
- Mixity with P33 series by using same body connector kit
- 2, 4, 16 bar, non-relieving regulators as an option
- Auto drain and metallic bowl as an option
- Polycarbonate bowl, plastic bowl guard as standard



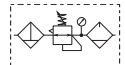
Combination Filter + Regulator + Lubricator, 8 bar, 5 micron



| Port size | Flow | | Manual drain | Auto drain |
|-----------|-------|--------|-----------------|-----------------|
| | dm3/s | (scfm) | | |
| G1/2 | 40 | 85 | P32CB14GEMNGLNW | P32CB14GEANGLNW |



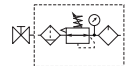
Combination Filter/Regulator + Lubricator, 8 bar, 5 micron



| Port size | Flow | | Manual drain | Auto drain |
|-----------|-------|--------|-----------------|-----------------|
| | dm3/s | (scfm) | | |
| G1/2 | 43 | 90 | P32CA14GEMNGLNW | P32CA14GEANGLNW |



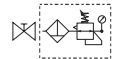
Combination Ball Valve + Filter/Regulator + Lubricator, 8 bar, 5 micron



| Port size | Flow | | Manual drain | Auto drain |
|-----------|-------|--------|-----------------|-----------------|
| | dm3/s | (scfm) | | |
| G1/2 | 43 | 90 | P32QA14GEMNGLNW | P32QA14GEANGLNW |



Combination Ball Valve + Filter/Regulator, 8 bar, 5 micron



| Port size | Flow | | Manual drain | Auto drain |
|-----------|-------|--------|---------------|---------------|
| | dm3/s | (scfm) | | |
| G1/2 | 43 | 90 | P32QN14GEMNGW | P32QN14GEANGW |

Note: use P32KA94CP kit for converting to NPT air ports
 P32KA13CP to G3/8, P32KA93CP to 3/8NPT
 P32KA12CP to G1/4, P32KA92CP to 1/4NPT

