



## E5CC-TRX3D5M-000

Temp. controller, PRO, 1/16 DIN (48 x 48 mm), Progr., 3 AUX, 1 x Relay OUT, 24V AC/DC

# Specifications

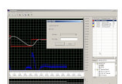
Size	1/16 DIN (48 x 48 mm)
Functions	ON/OFF control, PID control
Number of control loops	1
Temperature input type	B, C (WRe5-26), E, J, JPt100, K, L, N, P (PLII), Pt100, R, S, T, U
Linear analog input type	0 to 10 V, 0 to 20 mA, 0 to 5 V, 1 to 5 V, 4 to 20 mA
Temperature range	-200-2300 °C
Features	SV programmer (8 programs of 32 segments)
Number of event inputs	0
Number of alarm outputs	3
Supply voltage AC	20.4-26.4 V
Supply voltage DC	20.4-26.4 V
Control output	Relay
Terminal type	Screw

# Accessories



**E58-CIFQ2**

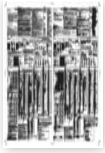
E5CB & E5CC and E5EC\* accessory, quick link programming cable, allows direct USB connection without requirement for communications card or power supply. Also the display will be powered (CX-Thermo v4.4 is needed). \*For E5EC front connection.



**EST2-2C-MV4**

CX-Thermo, direct 1 to 1 connecting software (1 to several if same TC type), for programming and monitoring E5\_N (version 5 & 6), E5ZN and CelciuX (EJ1)

## CAD Library



### **E5CC-T** Instruction Manual

EN PDF 6.82 MB



### **E5\_C** Brochure

EN PDF 5.18 MB



### **E5\_C** safety\_precautions Instruction Sheet

EN PDF 1.76 MB



### **E5\_C/E5\_C-T Digital Temperature Controller** Datasheet

EN PDF 40.8 MB



### **EAC Mark removal** Discontinuation Notice

EN PDF 221 KB