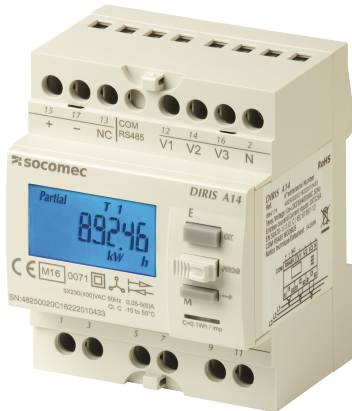


48250020

Energy Meter DIRIS A-14 DIN rail mounted



The DIRIS A14 is an MID-certified multi-measurement meter - for measuring electrical values in low voltage networks. It enables viewing of all electrical parameters and operation of measurement, metering and communication functions.

Strong points

- Available in MID certified module B+D version
- Bi-directional metering (four quadrants)
- Multi-measurement and load curve
- Conformity to IEC 61557-12
- Detection of connection errors

Compliance with standards

- IEC 61557-12
- IEC 62053-23 Class 2
- EN50470-1
- EN50470-3 Class C

Access to resources (ex: manuals)

Technical Characteristics

Application	Monitoring
Communication ports	RS485
Communication protocols	Modbus
Model	A14
Type	DIN rail mounted

Classification

UNSPSC	83101808
ETIM Class	EC002301
IGCC	6042

Commerce

Description	MID Power monitoring DIRIS A-14 MID DIN-rail mounted with Modbus communication protocols and RS485 communication ports, for measuring electrical values in low voltage networks
Effective date	2014-02-07
Offer Life Cycle Code	40
Country of origin	FR

ETIM - Electrical characteristics

Accuracy class active energy according to IEC 62053-22	0.2S
Accuracy class reactive energy according to IEC 62053-23	Other
Sampling frequency [Hz]	60
Number of voltage measurement inputs	3
Number of current measurement inputs	3
Voltage type (supply voltage)	AC
Measuring range for frequency [Hz]	50..60

ETIM - Technical features

Ampere meter	Yes
Blind power meter	Yes
With rotational speed meter	No
Frequency meter	Yes
Pulse counter	No
Voltmeter	Yes
Effective power measurement device	Yes
Display	LCD
Remote display	No

Logistics

GTIN/EAN	3596032787394
Customs number	9030310090
Price unit	PC
Weight of the packing unit [kg]	0.337
Length of the packing unit [m]	0.135

Width of the packing unit [m]	0.09
Depth of the packing unit [m]	0.11
Norms	
Conformity to standards	IEC