


2A-M

HEAVY DUTY RING TERMINAL, WITHOUT INSPECTION HOLE, WITH LONG NECK, FOR COPPER CONDUCTORS



CERTIFICATIONS & APPROVALS

 UL (cULus)

Features

TECHNICAL INFORMATION

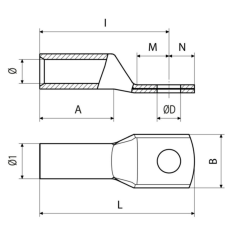
Minimum operating temperature	-50°C
Maximum operating temperature	150°C
Number of holes on the palm	1
Easy insertion input	Yes
Surface treatment	tin plating
Maximum operating voltage	35000V

MATERIAL COMPOSITION AND TREATMENTS

Conductor body material	Rame elettrolitico con purezza superiore al 99,95%
Annealing	Yes

CLASSIFICATION AND DATA ORDERING

Customs code	85369010
--------------	----------



2A3-M

Range of cable cross section (flexible) [mm²]
16Range of cable cross section (low stranded) [mm²]
16

tipo	Crimping geometry	Screw diameter	ØD [mm]	B [mm]	N [mm]	M [mm]	I [mm]	Tightening torque (high conductivity screw) [nm]	Tightening torque (8.8 grade screw) [nm]	L [mm]	A [mm]	Ø [mm]	Cable stripping length [mm]	Ø1 [mm]	Unit in minimal packaging [pce]	Unit in standard packaging [pce]	ROHS compliant
2A3-M8	hexagonal; indent	M8	8.4	15	8	9	35.5	10	20	43.5	22	5.8	25	7.9	100	600	Yes
2A3-M10	hexagonal; indent	M10	10.5	18	10	11	37.5	20	35	47.5	22	5.8	25	7.9	100	500	Yes

2A5-M

Range of cable cross section (flexible) [mm²]
25Range of cable cross section (low stranded) [mm²]
25

tipo	Crimping geometry	Screw diameter	ØD [mm]	B [mm]	N [mm]	M [mm]	I [mm]	Tightening torque (high conductivity screw) [nm]	Tightening torque (8.8 grade screw) [nm]	L [mm]	A [mm]	Ø [mm]	Cable stripping length [mm]	Ø1 [mm]	Unit in minimal packaging [pce]	Unit in standard packaging [pce]	ROHS compliant
2A5-M8	hexagonal; indent	M8	8.4	15	8	9	43	10	20	51	25.5	7	29	9.3	100	400	Yes
2A5-M10	hexagonal; indent	M10	10.5	18	10	11	45	20	35	55	25.5	7	29	9.3	50	300	Yes
2A5-M12	hexagonal; indent	M12	13.2	21	12	14	48	40	50	60	25.5	7	29	9.3	50	300	Yes

2A7-M

Range of cable cross section (flexible) [mm²]
25Range of cable cross section (low stranded) [mm²]
35

tipo	Crimping geometry	Screw diameter	ØD [mm]	B [mm]	N [mm]	M [mm]	I [mm]	Tightening torque (high conductivity screw) [nm]	Tightening torque (8.8 grade screw) [nm]	L [mm]	A [mm]	Ø [mm]	Cable stripping length [mm]	Ø1 [mm]	Unit in minimal packaging [pce]	Unit in standard packaging [pce]	ROHS compliant
2A7-M8	hexagonal; indent	M8	8.4	17	8	9	45	10	20	53	26	8.9	29	11.7	50	200	Yes
2A7-M10	hexagonal; indent	M10	10.5	19	10	11	47	20	35	57	26	8.9	29	11.7	50	200	Yes
2A7-M12	hexagonal; indent	M12	13.2	21	12	14	50	40	50	62	26	8.9	29	11.7	50	200	Yes

2A10-M

Range of cable cross section (flexible) [mm²]
35Range of cable cross section (low stranded) [mm²]
50

tipo	Crimping geometry	Screw diameter	ØD [mm]	B [mm]	N [mm]	M [mm]	I [mm]	Tightening torque (high conductivity screw) [nm]	Tightening torque (8.8 grade screw) [nm]	L [mm]	A [mm]	Ø [mm]	Cable stripping length [mm]	Ø1 [mm]	Unit in minimal packaging [pce]	Unit in standard packaging [pce]	ROHS compliant
2A10-M10	hexagonal; indent	M10	10.5	20	10	11	53	20	35	63	30	10	33	13	50	100	Yes
2A10-M12	hexagonal; indent	M12	13.2	21	12	14	56	40	50	68	30	10	33	13	50	100	Yes
2A10-M14	hexagonal; indent	M14	15	25	14	16	58	65	70	72	30	10	33	13	50	150	Yes
2A10-M16	hexagonal; indent	M16	17	26	16	18	60	90	90	76	30	10	33	13	50	150	Yes

2A14-M

Range of cable cross section (flexible) [mm²]
50Range of cable cross section (low stranded) [mm²]
70

tipo	Crimping geometry	Screw diameter	ØD [mm]	B [mm]	N [mm]	M [mm]	I [mm]	Tightening torque (high conductivity screw) [nm]	Tightening torque (8.8 grade screw) [nm]	L [mm]	A [mm]	Ø [mm]	Cable stripping length [mm]	Ø1 [mm]	Unit in minimal packaging [pce]	Unit in standard packaging [pce]	ROHS compliant
2A14-M10	hexagonal; indent	M10	10.5	21	10	11	60	20	35	70	36	11.3	40	14.6	50	100	Yes

tipo	Crimping geometry	Screw diameter	ØD [mm]	B [mm]	N [mm]	M [mm]	I [mm]	Tightening torque (high conductivity screw) [nm]	Tightening torque (8.8 grade screw) [nm]	L [mm]	A [mm]	Ø [mm]	Cable stripping length [mm]	Ø1 [mm]	Unit in minimal packaging [pce]	Unit in standard packaging [pce]	ROHS compliant
2A14-M12	hexagonal; indent	M12	13.2	22	12	14	63	40	50	75	36	11.3	40	14.6	50	100	Yes
2A14-M14	hexagonal; indent	M14	15	25	14	16	65	65	70	79	36	11.3	40	14.6	50	100	Yes
2A14-M16	hexagonal; indent	M16	17	26	16	18	67	90	90	83	36	11.3	40	14.6	50	100	Yes

2A19-M

Range of cable cross section (flexible) [mm²]
70

Range of cable cross section (low stranded) [mm²]
95

tipo	Crimping geometry	Screw diameter	ØD [mm]	B [mm]	N [mm]	M [mm]	I [mm]	Tightening torque (high conductivity screw) [nm]	Tightening torque (8.8 grade screw) [nm]	L [mm]	A [mm]	Ø [mm]	Cable stripping length [mm]	Ø1 [mm]	Unit in minimal packaging [pce]	Unit in standard packaging [pce]	ROHS compliant
2A19-M10	hexagonal; indent	M10	10.5	25	10	11	66.5	20	35	76.5	40	13.5	44	17.5	25	50	Yes
2A19-M12	hexagonal; indent	M12	13.2	25	12	14	69.5	40	50	81.5	40	13.5	44	17.5	25	50	Yes
2A19-M14	hexagonal; indent	M14	15	25	14	16	71.5	65	70	85.5	40	13.5	44	17.5	25	75	Yes
2A19-M16	hexagonal; indent	M16	17	27	16	18	73.5	90	90	90.5	40	13.5	44	17.5	25	50	Yes
2A19-M20	hexagonal; indent	M20	21	29	20	22	77.5		150	97.5	40	13.5	44	17.5	25	50	Yes

2A24-M

Range of cable cross section (flexible) [mm²]
95

Range of cable cross section (low stranded) [mm²]
120

tipo	Crimping geometry	Screw diameter	ØD [mm]	B [mm]	N [mm]	M [mm]	I [mm]	Tightening torque (high conductivity screw) [nm]	Tightening torque (8.8 grade screw) [nm]	L [mm]	A [mm]	Ø [mm]	Cable stripping length [mm]	Ø1 [mm]	Unit in minimal packaging [pce]	Unit in standard packaging [pce]	ROHS compliant
2A24-M10	hexagonal; indent	M10	10.5	28.5	10	11	72	20	35	82	42	15.2	47	19.6	15	30	Yes
2A24-M12	hexagonal; indent	M12	13.2	28.5	12	14	75	40	50	87	42	15.2	47	19.6	15	30	Yes
2A24-M14	hexagonal; indent	M14	15	28.5	14	16	77	65	70	91	42	15.2	47	19.6	15	30	Yes
2A24-M16	hexagonal; indent	M16	17	28.5	16	18	79	90	90	95	42	15.2	47	19.6	15	30	Yes
2A24-M20	hexagonal; indent	M20	21	30	20	22	83		150	103	42	15.2	47	19.6	25	50	Yes

2A30-M

Range of cable cross section (flexible) [mm²]
120

Range of cable cross section (low stranded) [mm²]
150

tipo	Crimping geometry	Range of cable cross section (copper rope) [mm ²]	Screw diameter	ØD [mm]	B [mm]	N [mm]	M [mm]	I [mm]	Tightening torque (high conductivity screw) [nm]	Tightening torque (8.8 grade screw) [nm]	L [mm]	A [mm]	Ø [mm]	Cable stripping length [mm]	Ø1 [mm]	Unit in minimal packaging [pce]	Unit in standard packaging [pce]	ROHS compliant
2A30-M10	hexagonal; indent		M10	10.5	31.5	11	13	81	20	35	92	49	16.7	54	21.5	15	30	Yes
2A30-M12	hexagonal; indent	125	M12	13.2	31.5	14	16	84	40	50	98	49	16.7	54	21.5	15	30	Yes
2A30-M14	hexagonal; indent		M14	15	31.5	16	18	86	65	70	102	49	16.7	54	21.5	15	30	Yes

tipo	Crimping geometry	Screw diameter	ØD [mm]	B [mm]	N [mm]	M [mm]	I [mm]	Tightening torque (high conductivity screw) [nm]	Tightening torque (8.8 grade screw) [nm]	L [mm]	A [mm]	Ø [mm]	Cable stripping length [mm]	Ø1 [mm]	Unit in minimal packaging [pce]	Unit in standard packaging [pce]	ROHS compliant
2A80-M12	hexagonal; indent	M12	13.2	51	19	22	121	40	50	140	70	27	77	35	5	10	Yes
2A80-M14	hexagonal; indent	M14	15	51	19	22	121	65	70	140	70	27	77	35	5	10	Yes
2A80-M16	hexagonal; indent	M16	17	51	19	22	121	90	90	140	70	27	77	35	5	10	Yes
2A80-M20	hexagonal; indent	M20	21	51	23	24	123		150	146	70	27	77	35	5	15	Yes

2A100-M

Range of cable cross section (flexible) [mm²]

400

Range of cable cross section (low stranded) [mm²]

500

tipo	Crimping geometry	Screw diameter	ØD [mm]	B [mm]	N [mm]	M [mm]	I [mm]	Tightening torque (high conductivity screw) [nm]	Tightening torque (8.8 grade screw) [nm]	L [mm]	A [mm]	Ø [mm]	Cable stripping length [mm]	Ø1 [mm]	Unit in minimal packaging [pce]	Unit in standard packaging [pce]	ROHS compliant
2A100-M16	hexagonal; indent	M16	17	56.5	19	22	122	90	90	141	67	30.3	74	39.5	1	10	Yes
2A100-M20	hexagonal; indent	M20	21	56.5	23	24	124		150	147	67	30.3	74	39.5	1	10	Yes

2A120-M

Range of cable cross section (low stranded) [mm²]

500

tipo	Crimping geometry	Screw diameter	ØD [mm]	B [mm]	N [mm]	M [mm]	I [mm]	Tightening torque (high conductivity screw) [nm]	Tightening torque (8.8 grade screw) [nm]	L [mm]	A [mm]	Ø [mm]	Cable stripping length [mm]	Ø1 [mm]	Unit in minimal packaging [pce]	Unit in standard packaging [pce]	ROHS compliant
2A120-M16	hexagonal; indent	M16	17	61.5	19	22	140	90	90	159	85	33.4	94	42.6	1	8	Yes
2A120-M20	hexagonal; indent	M20	21	61.5	23	24	142		150	165	85	33.4	94	42.6	1	20	Yes

2A160-M

Range of cable cross section (flexible) [mm²]

630

Range of cable cross section (low stranded) [mm²]

800

tipo	Crimping geometry	Screw diameter	ØD [mm]	B [mm]	N [mm]	M [mm]	I [mm]	Tightening torque (8.8 grade screw) [nm]	L [mm]	A [mm]	Ø [mm]	Cable stripping length [mm]	Ø1 [mm]	Unit in minimal packaging [pce]	Unit in standard packaging [pce]	ROHS compliant
2A160-M20	hexagonal; indent	M20	21	72	23	24	164	150	187	100	38	110	50	1	12	Yes

2A200-M

Range of cable cross section (flexible) [mm²]

800

Range of cable cross section (low stranded) [mm²]

1000

tipo	Crimping geometry	Screw diameter	ØD [mm]	B [mm]	N [mm]	M [mm]	I [mm]	Tightening torque (8.8 grade screw) [nm]	L [mm]	A [mm]	Ø [mm]	Cable stripping length [mm]	Ø1 [mm]	Unit in minimal packaging [pce]	Unit in standard packaging [pce]	ROHS compliant
2A200-M20	hexagonal; indent	M20	21	82	23	24	179	150	202	110	44	121	56	1	6	Yes