



## E5CC-RX3D5M-006

Temperature controller, 1/16 DIN (48x48 mm), 1 Relay output, 3 AUX, 2 Event input, Transfer output, 24 VAC/DC

# Specifications

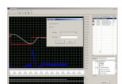
Size	1/16 DIN (48 x 48 mm)
Functions	ON/OFF control, PID control
Number of control loops	1
Temperature input type	B, C (WRe5-26), E, J, JPt100, K, L, N, P (PLII), Pt100, R, S, T, U
Linear analog input type	0 to 10 V, 0 to 20 mA, 0 to 5 V, 1 to 5 V, 4 to 20 mA
Temperature range	-200-2300 °C
Features	Transfer output
Number of event inputs	2
Number of alarm outputs	3
Supply voltage AC	20.4-26.4 V
Supply voltage DC	20.4-26.4 V
Control output	Relay
Terminal type	Screw

# Accessories



**E58-CIFQ2**

E5CB & E5CC and E5EC\* accessory, quick link programming cable, allows direct USB connection without requirement for communications card or power supply. Also the display will be powered (CX-Thermo v4.4 is needed). \*For E5EC front connection.



**EST2-2C-MV4**

CX-Thermo, direct 1 to 1 connecting software (1 to several if same TC type), for programming and monitoring E5\_N (version 5 & 6), E5ZN and CelciuX (EJ1)

## CAD Library



### Digital Temperature Controllers Brochure

EN PDF 4.45 MB



### E5CC Instruction Manual

EN PDF 4.17 MB



### E5CN-E5CC Conversion File Software

EN ZIP 613 KB



### E5\_C safety\_precautions Instruction Sheet

EN PDF 1.76 MB



### E5\_C/E5\_C-T Digital Temperature Controller Datasheet

EN PDF 40.8 MB



### EAC Mark removal Discontinuation Notice

EN PDF 221 KB



### Panel Building Brochure

EN PDF 3.11 MB



### Thermanc Temperature Simulation Software

EN ZIP 16.2 MB