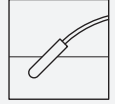




Float Switch

LFL1-*K-N-*****



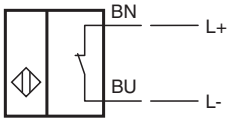
- Switch element: float switch with initiator, **mercury-free**
- Electrical connections in acc. with NAMUR for hazardous area
- Limit value detection for fluids
- Sleeve design: small diameter, mounting through G1 tap hole possible
- Ball design: high buoyancy



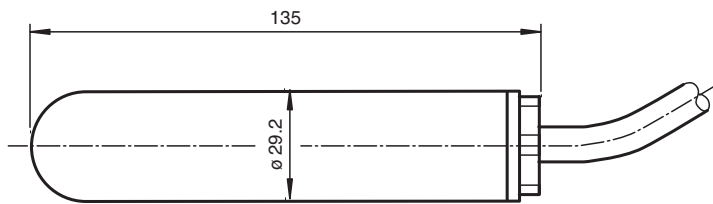
Function

The initiator (NC contact) is integrated in a PP float and is activated in the event of deviations from the horizontal position. The switching ball in the float, which moves along an axis, activates the switching event in the initiator inductively. The switch output provided by the initiator is a switch signal in accordance with EN 60947-5-6 (NAMUR).

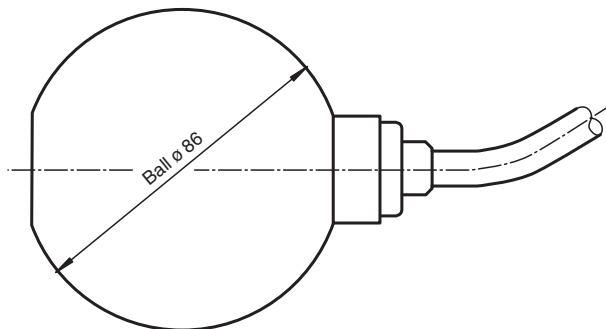
Application



Dimensions



Sleeve design LFL1-CK-N



Ball design LFL1-BK-N

Release date: 2025-08-14 Date of issue: 2025-08-14 Filename: t3009_eng.pdf

Refer to "General Notes Relating to Pepperl+Fuchs Product Information".

Pepperl+Fuchs Group
www.pepperl-fuchs.com

USA: +1 330 486 0002
pa-info@us.pepperl-fuchs.com

Germany: +49 621 776 2222
pa-info@de.pepperl-fuchs.com

Singapore: +65 6779 9091
pa-info@sg.pepperl-fuchs.com

PEPPERL+FUCHS

Technical Data

General specifications		
Construction type	Inductive sensor with switching ball	
Series	LFL1-**-N	
Supply		
Rated voltage	U _r	8.2 V ± 2 V
Current consumption	< 1.0 mA unswitched (de-energized at the bottom), > 2.2 mA switched (floated up at the top)	
Reverse polarity protection	yes	
Output		
Connection	NAMUR acc. to EN 60947-5-6 , 2-wire	
Directive conformity		
Electromagnetic compatibility		
Directive 2014/30/EU	EN 60947-5-2:2007+A1:2012	
Conformity		
Degree of protection	IEC 60529:2001	
Function and system design		
Equipment architecture	A measuring system consists of a float switch LFL1-**-N and a transformer isolated barrier, e. g. KFD2-SR2-Ex1.W.	
Operating conditions		
Installation conditions		
Installation instructions	range of application and minimum length between mounting and float: - PVC version: ≥ 50 mm (2 inch), preferred for water - PUR version: ≥ 100 mm (4 inch), preferred for fuels, heating oils, oily fluids - CSM/CM version: ≥ 100 mm (4 inch), preferred for many acids and lyes mounting: - The float switch is mounted either from sideways through a cable gland ≥ G1A into the vessel or - by means of a counter weight or rods (e. g. float switch combination) from the top. The pivot of the cable should always be horizontal.	
Process conditions		
Process pressure (static pressure)	sleeve design: ≤ 3 bar at 20 °C (68 °F) ball design: ≤ 2 bar at 20 °C (68 °F)	
Density	sleeve design: ≥ 0.8 g/cm ³ ball design: ≥ 0.6 g/cm ³	
Ambient conditions		
Ambient temperature	-20 ... 70 °C (-4 ... 158 °F)	
Storage temperature	-25 ... 70 °C (-13 ... 158 °F)	
Altitude	≤ 2000 m above MSL	
Mechanical specifications		
Degree of protection	IP68	
Data for application in connection with hazardous areas		
EU-type examination certificate	TÜV 99 ATEX 1407	
Marking	⊕ II 2G Ex ia IIB T5 Gb	
Directive conformity		
Directive 2014/34/EU	EN 60079-0:2012+A11:2013 , EN 60079-11:2012	
Mechanical construction		
Material	float: PP (Polypropylene) cable: - PVC version: PVC cable, highly flexible (2 x 0.75 mm ²) - PUR version: PUR cable, highly flexible (2 x 0.50 mm ²) - CSM/CM version: CSM/CM cable (chlorinated polyethylene, (2 x 0.75 mm ²))	
Switching point	switch angle, measured against the horizontal: - upper switch point +15° ±5° - lower switch point -15° ±5°	
General information		
Supplementary information	Observe the certificates, declarations of conformity, instruction manuals, and manuals where applicable. For information see www.pepperl-fuchs.com .	
Accessories		

Release date: 2025-08-14 Date of issue: 2025-08-14 Filename: t3009_eng.pdf

Technical Data

Designation	<ul style="list-style-type: none"> - LFL-Z231, counter nut, G1A, PVC - LFL-Z32, counter weight, grey cast iron with plastic coating (Polycarbonate) - LFL-Z33, counter weight, grey cast iron with ECTFE coating (Halar) - LFL-Z131, gland screw connection G1A, PVC - LFL-Z132, gland screw connection G1A, brass - LFL-Z161, gland screw connection G2A, PVC - LFL-Z431, gland screw connection 1 NPT, PVC - LFL-Z461, gland screw connection 2 NPT, PVC
-------------	------------------------------------------------------------------------------------------------------------------------------------------------------------------------------------------------------------------------------------------------------------------------------------------------------------------------------------------------------------------------------------------------------------------------------------------------------------------------------------------------------------------------------------------

Safety Information

Users should take appropriate precautions when using accessories in explosion-hazardous areas. The counter weights LFL-Z32 and LFL-Z33 must not be used in explosion-hazardous area.

Type Code

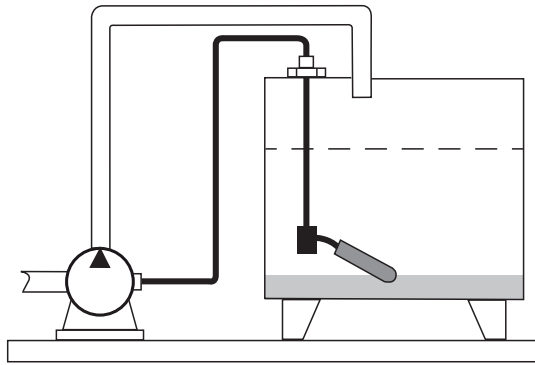
This overview does not mark options which are mutually exclusive.

L	F	L	1	-	(1)	K	-	N	-	(2)	(3)
LFL		Device									
LFL		Float switch									
1		Switching element									
1		Switching contact with switching ball									
(1)		Float									
B		Ball									
C		Sleeve									
K		Float material									
K		Plastic PP									
N		Electrical output									
N		NAMUR acc. to DIN EN 60947-5-6									
(2)		Cable material									
CSM		CSM/CM									
PUR		PUR									
PVC		PVC									
(3)		Cable length									
03		3 m									
05		5 m									
06		6 m									
10		10 m									

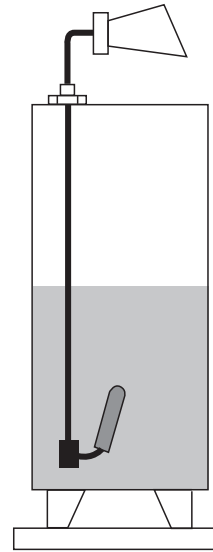
Release date: 2025-08-14 Date of issue: 2025-08-14 Filename: t3009_eng.pdf

Application

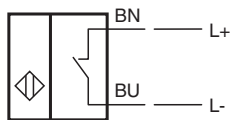
Level control via pump



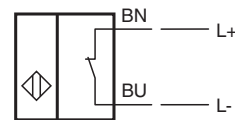
Level message via switching signal



Minimum fail safe mode connection



Maximum fail safe mode connection



Mounting

Mount the float switch in the following way:

- Insert the float switch into the tank through a tapped hole G1A.
- Screw the float switch with the gland screw connection G1A.
- If it is installed from above, use the counter weight LFL-Z32 or LFL-Z33 for mounting.



The fulcrum of the cable should always be horizontal.

The cable length between the fixture and the floating body is dependent on the cable type.

When using the counter weight, place an extra strain relief (e. g. a knot in the cable) behind the gland screw connection – on the outside of the tank.

Release date: 2025-08-14 Date of issue: 2025-08-14 Filename: t3009_eng.pdf