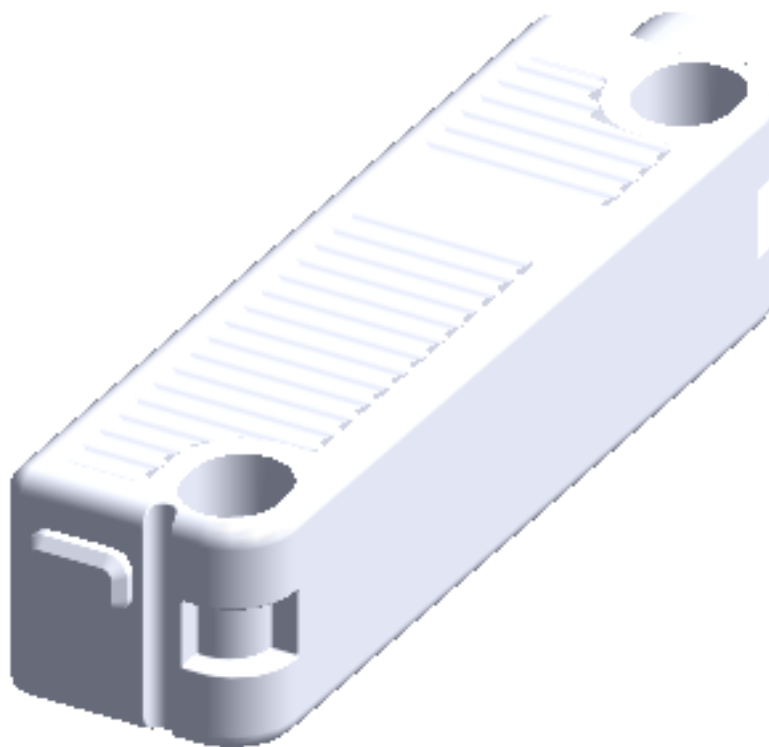


Contents

	Page
1 3D model	2
2 Configuration settings	3
3 Contact information	4

1 3D model



2 Configuration settings

Configuration	
Selection	Type
Type	RSS 36-SD-R-ST

Bill of Materials Data	
Manufacturer	K.A. Schmersal GmbH & Co. KG
Description	Safety sensor RSS36
Part number	101217290
Selection	RSS 36-SD-R-ST

3 Contact information

🏠 K. A. Schmersal GmbH & Co. KG Möddinghofe 30 42279 Wuppertal DE
✉ info@schmersal.com
@ www.schmersal.com