

## ACC-AZM40-PT-T-40MM



- Emergency exit as retrofit kit
- Push button with shortenable shaft
- Suitable for outside mounted AZM40
- Intuitive operation due to similarity to emergency stop
- Can be retrofitted to standard AZM40 (V2 or higher)

### Data

#### General data

Housing material	Plastic, glass-fibre reinforced thermoplastic, self-extinguishing
Material of the operators	Plastic, glass-fibre reinforced thermoplastic, self-extinguishing
Colour of the housing	Black
Colour of the operating element	Red
Gross weight	57 g

#### General data - Features

Emergency exit	Yes
----------------	-----

#### Mechanical data

Type of the fixing screws	2x M5
Type of the screw head	Countersunk screw
Tightening torque of the screw for release socket	0.55 Nm
Type of the fixing screws, release socket	M2 x 13 (TX6)

#### Mechanical data - Dimensions

Length	54 mm
Width	36 mm

## Mechanical data - Dimensions

Height 58 mm

Diameter hole 14 mm

## Note

Note (General)

Ideally suited for a frame thickness of 40 mm. Can be shortened by the customer up to a minimum frame thickness of 20 mm.

## Pictures

### Product picture (catalogue individual photo)



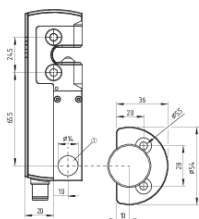
ID: kaz40f58

| 289.73 KB | .jpg | 999 x 1499 Pixel

| 20.57 KB | .jpg | 233 x 350 Pixel

| 40.59 KB | .png | 209 x 314 Pixel

### Dimensional drawing basic component



ID: kaz40g20

| 160.41 KB | .jpg | 999 x 1099 Pixel

| 7.88 KB | .png | 209 x 230 Pixel

### Assembly example



ID: kazm4m35

| 36.56 KB | .jpg | 1000 x 412 Pixel

| 5.55 KB | .png | 210 x 86 Pixel

### Assembly example



ID: kazm4m36

| 37.21 KB | .jpg | 1000 x 412 Pixel

| 5.31 KB | .png | 210 x 86 Pixel

---

The details and data referred to have been carefully checked. Images may diverge from original. Further technical data can be found in the manual. Technical amendments and errors possible.

Generated on: 12/06/2026, 11:05