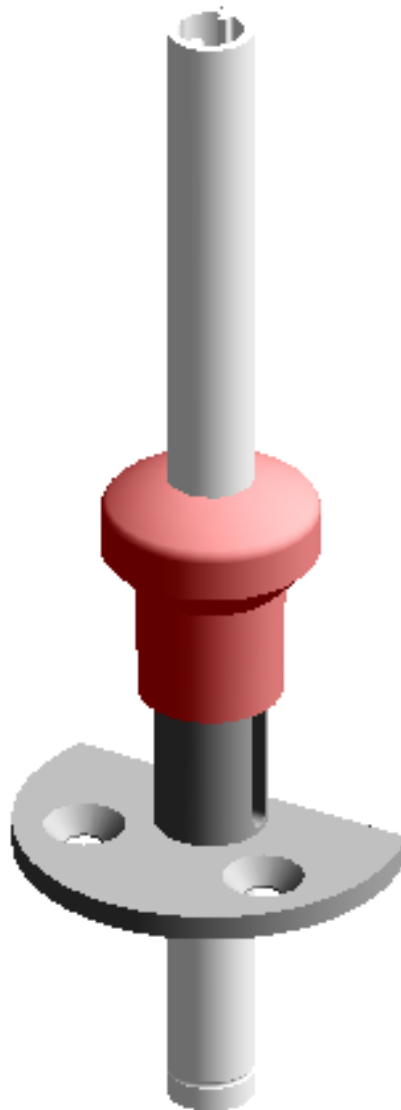


## Contents

	<b>Page</b>
<b>1 3D model</b>	<b>2</b>
<b>2 Configuration settings</b>	<b>3</b>
<b>3 Attachments / Technical document</b>	<b>4</b>
<b>4 Contact information</b>	<b>5</b>

## 1 3D model









## 2 Configuration settings

Configuration	
Selection	Type
Type	ACC-AZM40PT-T-40MM
Push button	Unactuated
Adapter extension length	36

Bill of Materials Data	
Manufacturer	K.A. Schmersal GmbH & Co. KG
Description	Emergency exit with push button ACC-AZM40PT-T-40MM
Part number	103054271
Selection	ACC-AZM40PT-T-40MM

### 3 Attachments / Technical document

Please double click with left mouse button on a paper clip symbol to open a file. You could also save a file when you click the symbol with the right mouse button.

- Operating instructions Emergency exit / Emergency release ACC-AZM40-PT-T/N 
- Operating instructions Retrofit kit ACC-AZM40-LEV-T/N 
- Operating instructions Lockout tag SZ40 
- Dimensional drawing Emergency exit / Emergency release ACC-AZM40-PT-T/N 
- Dimensional drawing Lockout tag SZ40 
- Dimensional drawing Mounting plate MP-AZM40 

## 4 Contact information

✉ K. A. Schmersal GmbH & Co. KG Möddinghofe 30 42279 Wuppertal DE  
✉ [info@schmersal.com](mailto:info@schmersal.com)  
@ [www.schmersal.com](http://www.schmersal.com)